



Vanilla | Chocolate | Flavor of the Week (+\$.50)

By the Scoop

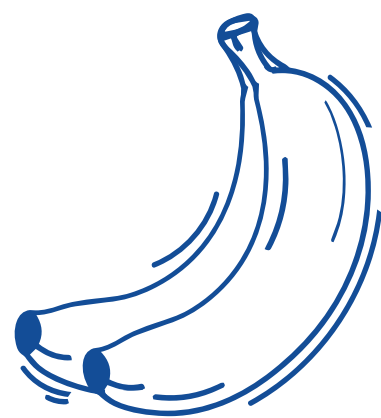
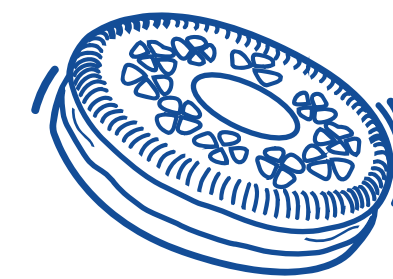
Cup or Cake Cone		Waffle Cone	
1 Scoop	\$3.49	Regular or Chocolate (+\$1.00)	
2 Scoops	\$4.49	2 Scoops	\$5.49
3 Scoops	\$6.99	3 Scoops	\$7.99

Upside Down Concrete

Up to 2 Mix-Ins Included



Small \$5.99



Medium \$7.49



Large \$8.99

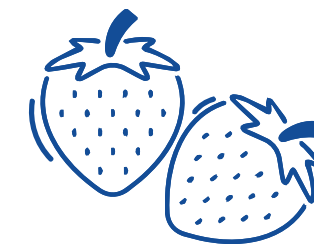


Goopy

Chocolate Syrup, Peanut Butter, Salted Caramel, Chocolate Fudge, Marshmallow Creme

Fruit

Strawberries, Wild Cherries, Bananas, Blueberries



Nuts

Cashews, Coconut, Peanuts, Pecans, Walnuts



Candy & Cookies

Cookie Dough, Graham Crackers, Heath, Rainbow Sprinkles, Chocolate Chips, Oreos, Butterfinger, Brownie Pieces, Snickers, M&Ms, Chocolate Sprinkles, Granola, Reese's, Gummies

The following are available in cups and shakes only:
Hot Fudge, Hot Salted Caramel, Espresso (\$0.95)

Shakes & Root Beer Float

*scoops for Root Beer Floats

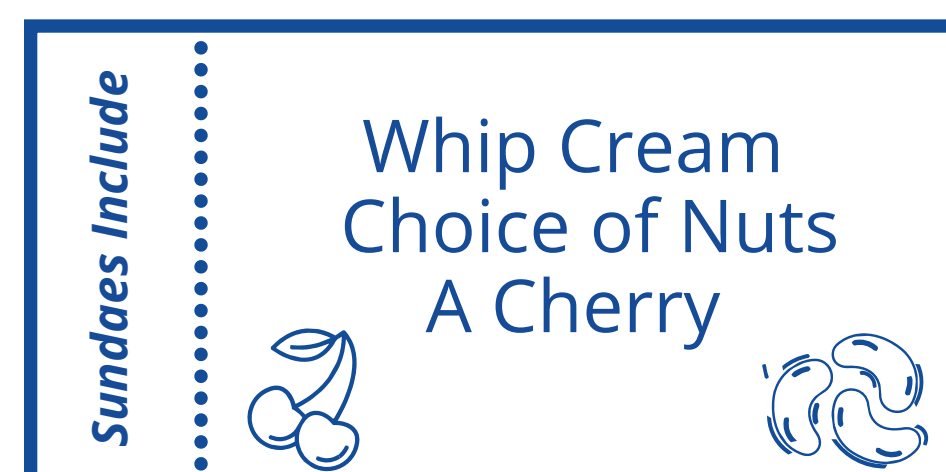
Medium (2 Scoops)*	\$5.99
Large (3 Scoops)*	\$7.99
Malted	\$0.75

Hot Fudge, Salted Caramel, or Turtle Sundae

Small (1 Scoop)	\$5.49
Medium (2 Scoops)	\$7.49
Large (3 Scoops)	\$8.99

Add any of the following to your order for an additional charge:

Goopy	\$ 0.95
Fruit	\$1.25
Nuts	\$1.50
Candy & Cookies	\$ 0.95



Pints To Go \$6.49